

I WANT TO SAVE ENERGY...

What are my lighting control options?

Good

Switch & Room Sensors

Advantages: Lowest cost and provides a minimum amount of savings.

Concerns: Least savings. Space coverage is not optimal. No daylight harvesting, no intelligence, not group programmable, and not easily re-purposed. Not networked to a Building Management System (BMS) to take advantage of optimized occupied and unoccupied.

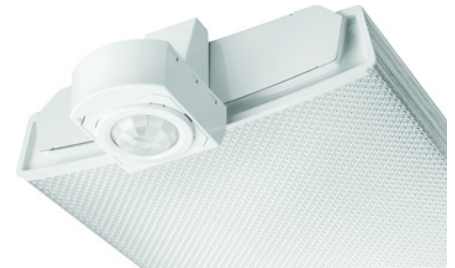


Better

Sensored Fixtures

Advantages: Each fixture has its own sensor giving excellent coverage. Programmable options such as zones and daylight harvesting.

Concerns: Not networked to a BMS to take advantage of optimized occupied and unoccupied.



Best

Networked Sensored Fixtures

Advantages: Most efficient. Each fixture has its own sensor giving excellent coverage. Programmable options such as zones and daylight harvesting. Networked to a BMS to take advantage of optimized occupied and unoccupied settings.

